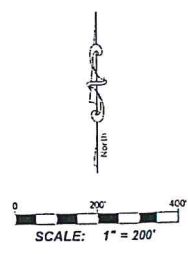
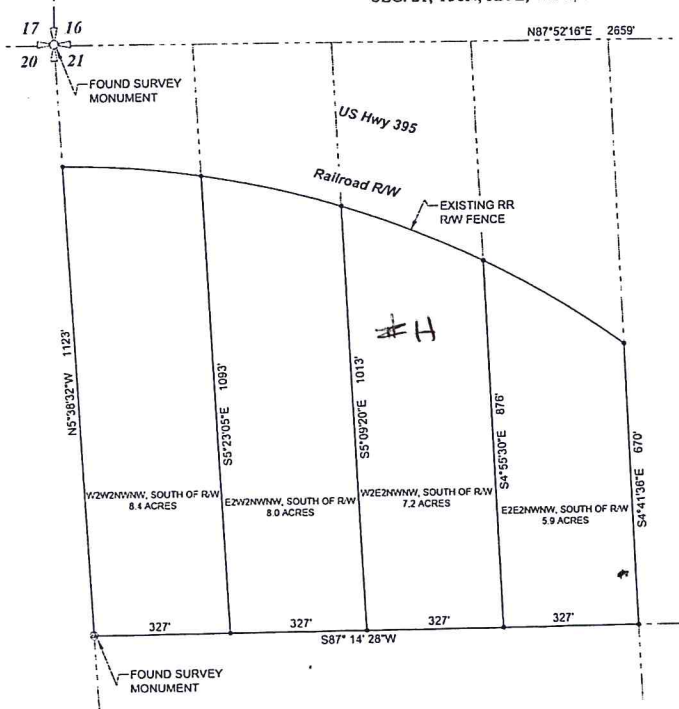


SURVEY EXHIBIT

NW1/4NW1/4, LYING SOUTH OF RAILROAD AND US HWY 395,
SEC. 21, T36N, R39E, W.M., STEVENS COUNTY, WASHINGTON



SURVEY EXHIBIT			
NW1/4NW1/4, LYING SOUTH OF RAILROAD AND US HWY 395, SEC. 21, T36N, R39E, W.M., STEVENS COUNTY, WASHINGTON			
4th LATITUDELANDSURVEY		13016 14th Street NW, Alaska, North Dakota 58110 & 466 South Oak Street, Columbia, WA 99114 www.latitudeandsurvey.com 701.542.2811	
FILE NAME		FOR	
23_078 Warner Boundary_SURVEY 2nd		Dana Warner	
SCALE	DATE	DRAWN BY	
20 F:1in	6/15/23	EJR	
JOB	REVISION	SHEET	
23_078	1/1	1/1	