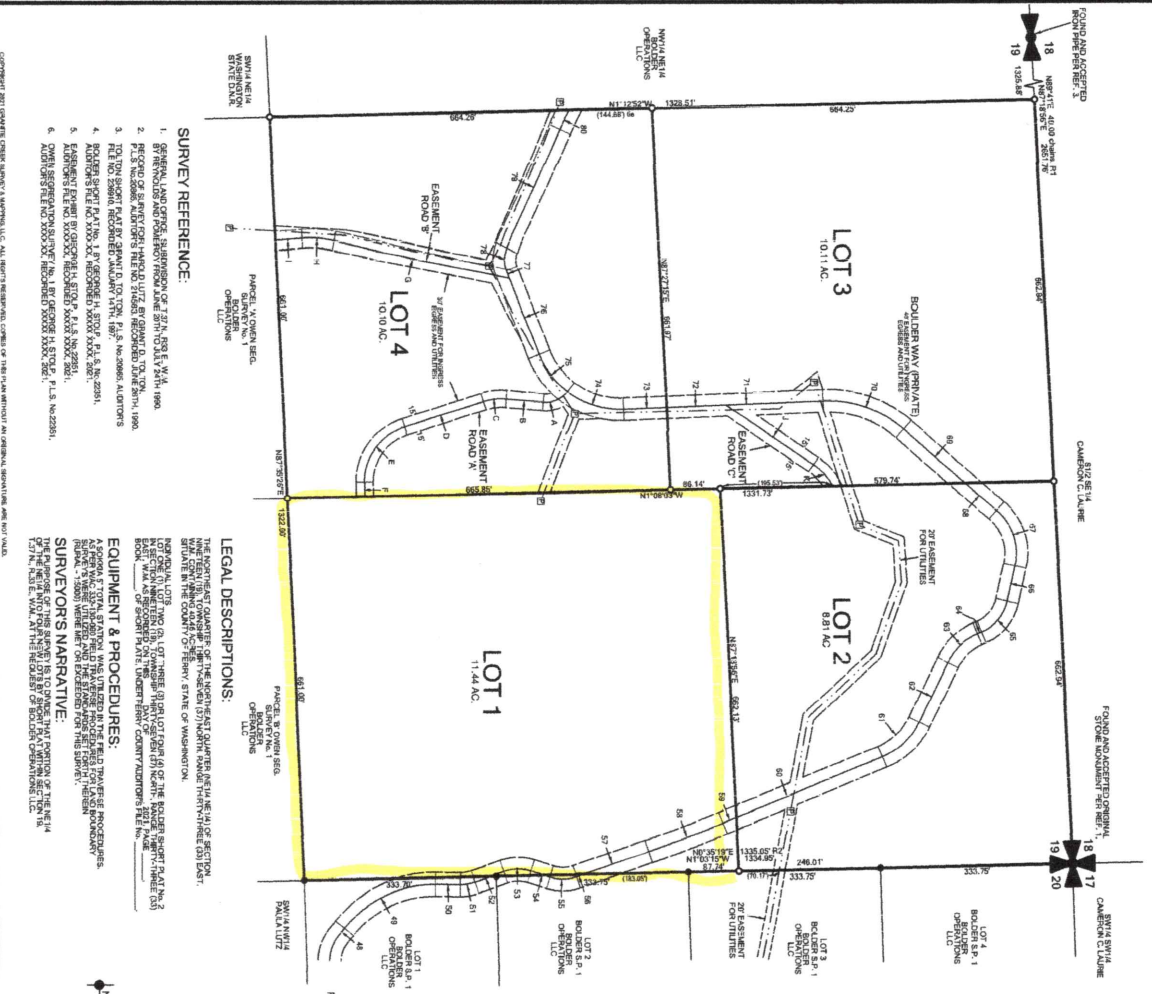


# BOLDER SHORT PLAT No. 2

THE NE 1/4 OF THE NE 1/4 OF SECTION 19, T.37 N., R.33 E., W.M.



- SURVEY REFERENCE:**
1. SURVEY OF SECTION 19, T.37 N., R.33 E., W.M. BY THE BOLDER VALLEY PRIVATE COMPANY, 2011.
  2. SURVEY OF BOLDER VALLEY PRIVATE COMPANY, 2011.
  3. SURVEY OF BOLDER VALLEY PRIVATE COMPANY, 2011.
  4. SURVEY OF BOLDER VALLEY PRIVATE COMPANY, 2011.
  5. SURVEY OF BOLDER VALLEY PRIVATE COMPANY, 2011.
  6. SURVEY OF BOLDER VALLEY PRIVATE COMPANY, 2011.

**LEGAL DESCRIPTIONS:**

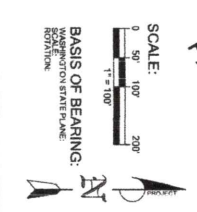
THE NE 1/4 OF THE NE 1/4 OF SECTION 19, T.37 N., R.33 E., W.M. IS DIVIDED INTO FOUR LOTS AS SHOWN ON THE ATTACHED MAP. THE TOTAL AREA OF THE SECTION IS 44.65 ACRES.

**EQUIPMENT & PROCEDURES:**

THE SURVEY WAS CONDUCTED USING THE FOLLOWING EQUIPMENT AND PROCEDURES:

**SURVEYOR'S NARRATIVE:**

THE SURVEY WAS CONDUCTED ON THE DATE INDICATED BELOW. THE SURVEYOR HAS REVIEWED THE PLAT AND FINDS IT TO BE CORRECT AND ACCURATE.



**NOTES:**

1. THIS PLAT IS A PRELIMINARY PLAT AND IS SUBJECT TO CHANGE WITHOUT NOTICE.
2. THE SURVEYOR HAS REVIEWED THE PLAT AND FINDS IT TO BE CORRECT AND ACCURATE.
3. THE SURVEYOR HAS REVIEWED THE PLAT AND FINDS IT TO BE CORRECT AND ACCURATE.
4. THE SURVEYOR HAS REVIEWED THE PLAT AND FINDS IT TO BE CORRECT AND ACCURATE.
5. THE SURVEYOR HAS REVIEWED THE PLAT AND FINDS IT TO BE CORRECT AND ACCURATE.
6. THE SURVEYOR HAS REVIEWED THE PLAT AND FINDS IT TO BE CORRECT AND ACCURATE.
7. THE SURVEYOR HAS REVIEWED THE PLAT AND FINDS IT TO BE CORRECT AND ACCURATE.
8. THE SURVEYOR HAS REVIEWED THE PLAT AND FINDS IT TO BE CORRECT AND ACCURATE.
9. THE SURVEYOR HAS REVIEWED THE PLAT AND FINDS IT TO BE CORRECT AND ACCURATE.
10. THE SURVEYOR HAS REVIEWED THE PLAT AND FINDS IT TO BE CORRECT AND ACCURATE.
11. THE SURVEYOR HAS REVIEWED THE PLAT AND FINDS IT TO BE CORRECT AND ACCURATE.



**ACKNOWLEDGMENTS**

BOLDER COUNTY ENGINEER: \_\_\_\_\_

BOLDER COUNTY ASSESSOR: \_\_\_\_\_

BOLDER COUNTY TREASURER: \_\_\_\_\_

**AUDITOR'S CERTIFICATE**

THE AUDITOR HAS REVIEWED THE PLAT AND FINDS IT TO BE CORRECT AND ACCURATE.

**PLATTING ADMINISTRATOR**

THE PLATTING ADMINISTRATOR HAS REVIEWED THE PLAT AND FINDS IT TO BE CORRECT AND ACCURATE.

**COUNTY ENGINEER**

THE COUNTY ENGINEER HAS REVIEWED THE PLAT AND FINDS IT TO BE CORRECT AND ACCURATE.

**ASSESSOR**

THE ASSESSOR HAS REVIEWED THE PLAT AND FINDS IT TO BE CORRECT AND ACCURATE.

**TREASURER**

THE TREASURER HAS REVIEWED THE PLAT AND FINDS IT TO BE CORRECT AND ACCURATE.

**SHORT PLAT NO. \_\_\_\_\_**

**FERRY COUNTY**

**PLATTING LAYOUT NAME:** \_\_\_\_\_

**DATE:** \_\_\_\_\_

**CHECKED BY:** \_\_\_\_\_

**DRAWING SCALE:** \_\_\_\_\_

**PRELIMINARY**

**Basement Road A**

**Basement Road B**

**Basement Road C**

**Basement Road D**

**Basement Road E**

**Basement Road F**

**Basement Road G**

**Basement Road H**

**Basement Road I**

**Basement Road J**

**Basement Road K**

**Basement Road L**

**Basement Road M**

**Basement Road N**

**Basement Road O**

**Basement Road P**

**Basement Road Q**

**Basement Road R**

**Basement Road S**

**Basement Road T**

**Basement Road U**

**Basement Road V**

**Basement Road W**

**Basement Road X**

**Basement Road Y**

**Basement Road Z**