

SPOKANE RIVER  
LITTLE SPOKANE  
LITTLE

OWNER'S CERTIFICATE

KNOW ALL MEN BY THESE PRESENTS THAT WE THE UNDERSIGNED, DALE M. KRAMER AND LEONA M. KRAMER, HUSBAND AND WIFE, AND JACK MCCRACKEN AND GRACE M. MCCRACKEN, HUSBAND AND WIFE, AND J. J. STREIBER, DALE M. KRAMER AND GRACE DIRKS, SECRETARY OF WESTERN HIGHLANDS, INC. AND DALE M. KRAMER, OWNERS IN FEE SIMPLE OF THE LAND HEREBY PLATTED, HAVE CAUSED TO BE PLACED IN TWO LOTS, BLOCKS AND STREETS THE LAND SHOWN HEREON TO BE KNOWN AS "THE SPOKANE RIVER ACRES," SAID LAND BEING GOVERNMENT LOTS 7, 8, 10, 11, 12, 13, 14, 15, 16, 17, 18, 19, 20, 21, 22, 23, 24, 25, 26, 27, 28, 29, 30, 31, 32, 33, 34, 35, 36, 37, 38, 39, 40, 41, 42, 43, 44, 45, 46, 47, 48, 49, 50, 51, 52, 53, 54, 55, 56, 57, 58, 59, 60, 61, 62, 63, 64, 65, 66, 67, 68, 69, 70, 71, 72, 73, 74, 75, 76, 77, 78, 79, 80, 81, 82, 83, 84, 85, 86, 87, 88, 89, 90, 91, 92, 93, 94, 95, 96, 97, 98, 99, 100, 101, 102, 103, 104, 105, 106, 107, 108, 109, 110, 111, 112, 113, 114, 115, 116, 117, 118, 119, 120, 121, 122, 123, 124, 125, 126, 127, 128, 129, 130, 131, 132, 133, 134, 135, 136, 137, 138, 139, 140, 141, 142, 143, 144, 145, 146, 147, 148, 149, 150, 151, 152, 153, 154, 155, 156, 157, 158, 159, 160, 161, 162, 163, 164, 165, 166, 167, 168, 169, 170, 171, 172, 173, 174, 175, 176, 177, 178, 179, 180, 181, 182, 183, 184, 185, 186, 187, 188, 189, 190, 191, 192, 193, 194, 195, 196, 197, 198, 199, 200, 201, 202, 203, 204, 205, 206, 207, 208, 209, 210, 211, 212, 213, 214, 215, 216, 217, 218, 219, 220, 221, 222, 223, 224, 225, 226, 227, 228, 229, 230, 231, 232, 233, 234, 235, 236, 237, 238, 239, 240, 241, 242, 243, 244, 245, 246, 247, 248, 249, 250, 251, 252, 253, 254, 255, 256, 257, 258, 259, 260, 261, 262, 263, 264, 265, 266, 267, 268, 269, 270, 271, 272, 273, 274, 275, 276, 277, 278, 279, 280, 281, 282, 283, 284, 285, 286, 287, 288, 289, 290, 291, 292, 293, 294, 295, 296, 297, 298, 299, 300, 301, 302, 303, 304, 305, 306, 307, 308, 309, 310, 311, 312, 313, 314, 315, 316, 317, 318, 319, 320, 321, 322, 323, 324, 325, 326, 327, 328, 329, 330, 331, 332, 333, 334, 335, 336, 337, 338, 339, 340, 341, 342, 343, 344, 345, 346, 347, 348, 349, 350, 351, 352, 353, 354, 355, 356, 357, 358, 359, 360, 361, 362, 363, 364, 365, 366, 367, 368, 369, 370, 371, 372, 373, 374, 375, 376, 377, 378, 379, 380, 381, 382, 383, 384, 385, 386, 387, 388, 389, 390, 391, 392, 393, 394, 395, 396, 397, 398, 399, 400, 401, 402, 403, 404, 405, 406, 407, 408, 409, 410, 411, 412, 413, 414, 415, 416, 417, 418, 419, 420, 421, 422, 423, 424, 425, 426, 427, 428, 429, 430, 431, 432, 433, 434, 435, 436, 437, 438, 439, 440, 441, 442, 443, 444, 445, 446, 447, 448, 449, 450, 451, 452, 453, 454, 455, 456, 457, 458, 459, 460, 461, 462, 463, 464, 465, 466, 467, 468, 469, 470, 471, 472, 473, 474, 475, 476, 477, 478, 479, 480, 481, 482, 483, 484, 485, 486, 487, 488, 489, 490, 491, 492, 493, 494, 495, 496, 497, 498, 499, 500, 501, 502, 503, 504, 505, 506, 507, 508, 509, 510, 511, 512, 513, 514, 515, 516, 517, 518, 519, 520, 521, 522, 523, 524, 525, 526, 527, 528, 529, 530, 531, 532, 533, 534, 535, 536, 537, 538, 539, 540, 541, 542, 543, 544, 545, 546, 547, 548, 549, 550, 551, 552, 553, 554, 555, 556, 557, 558, 559, 560, 561, 562, 563, 564, 565, 566, 567, 568, 569, 570, 571, 572, 573, 574, 575, 576, 577, 578, 579, 580, 581, 582, 583, 584, 585, 586, 587, 588, 589, 590, 591, 592, 593, 594, 595, 596, 597, 598, 599, 600, 601, 602, 603, 604, 605, 606, 607, 608, 609, 610, 611, 612, 613, 614, 615, 616, 617, 618, 619, 620, 621, 622, 623, 624, 625, 626, 627, 628, 629, 630, 631, 632, 633, 634, 635, 636, 637, 638, 639, 640, 641, 642, 643, 644, 645, 646, 647, 648, 649, 650, 651, 652, 653, 654, 655, 656, 657, 658, 659, 660, 661, 662, 663, 664, 665, 666, 667, 668, 669, 670, 671, 672, 673, 674, 675, 676, 677, 678, 679, 680, 681, 682, 683, 684, 685, 686, 687, 688, 689, 690, 691, 692, 693, 694, 695, 696, 697, 698, 699, 700, 701, 702, 703, 704, 705, 706, 707, 708, 709, 710, 711, 712, 713, 714, 715, 716, 717, 718, 719, 720, 721, 722, 723, 724, 725, 726, 727, 728, 729, 730, 731, 732, 733, 734, 735, 736, 737, 738, 739, 740, 741, 742, 743, 744, 745, 746, 747, 748, 749, 750, 751, 752, 753, 754, 755, 756, 757, 758, 759, 760, 761, 762, 763, 764, 765, 766, 767, 768, 769, 770, 771, 772, 773, 774, 775, 776, 777, 778, 779, 780, 781, 782, 783, 784, 785, 786, 787, 788, 789, 790, 791, 792, 793, 794, 795, 796, 797, 798, 799, 800, 801, 802, 803, 804, 805, 806, 807, 808, 809, 810, 811, 812, 813, 814, 815, 816, 817, 818, 819, 820, 821, 822, 823, 824, 825, 826, 827, 828, 829, 830, 831, 832, 833, 834, 835, 836, 837, 838, 839, 840, 841, 842, 843, 844, 845, 846, 847, 848, 849, 850, 851, 852, 853, 854, 855, 856, 857, 858, 859, 860, 861, 862, 863, 864, 865, 866, 867, 868, 869, 870, 871, 872, 873, 874, 875, 876, 877, 878, 879, 880, 881, 882, 883, 884, 885, 886, 887, 888, 889, 890, 891, 892, 893, 894, 895, 896, 897, 898, 899, 900, 901, 902, 903, 904, 905, 906, 907, 908, 909, 910, 911, 912, 913, 914, 915, 916, 917, 918, 919, 920, 921, 922, 923, 924, 925, 926, 927, 928, 929, 930, 931, 932, 933, 934, 935, 936, 937, 938, 939, 940, 941, 942, 943, 944, 945, 946, 947, 948, 949, 950, 951, 952, 953, 954, 955, 956, 957, 958, 959, 960, 961, 962, 963, 964, 965, 966, 967, 968, 969, 970, 971, 972, 973, 974, 975, 976, 977, 978, 979, 980, 981, 982, 983, 984, 985, 986, 987, 988, 989, 990, 991, 992, 993, 994, 995, 996, 997, 998, 999, 1000.

THE FOLLOWING COVENANTS SHALL BE PART OF THIS DEDICATION:

1. NO CAMPER, TRAILER, BUILDING, ETC. SHALL BE SET CLOSER THAN 25 FEET TO ANY PROPERTY LINE.
2. ALL BUILDINGS SHALL BE CONSTRUCTED ACCORDING TO PROVISIONS OF THE CURRENT UNIFORM BUILDING CODE.
3. NOT MORE THAN ONE FAMILY RESIDENTIAL UNIT MAY BE PLACED ON ONE TRACT, CONSTRUCTION OF THE EXTERIOR SHALL BE COMPLETED WITHIN FOUR YEARS OF THE START OF CONSTRUCTION.
4. NOT MORE THAN THREE CAMPERS, TRAILER, OR SIMILAR RECREATIONAL USE UNITS MAY OCCUPY THE TRACT AT ANY ONE TIME FOR A PERIOD OF MORE THAN 48 HOURS IN ONE WEEK.
5. COMMERCIAL ACTIVITY SHALL BE LIMITED TO INOBTUSIVE IN HOME ENTERPRISE.
6. THE OWNER RESERVES SUCH EASEMENTS AS MAY BE NECESSARY OVER AND ALONG EACH LOT FOR PUBLIC UTILITIES.
7. ALL FACILITIES FOR SEWAGE DISPOSAL AND WATER SUPPLY SYSTEMS FOR PORTABLE USE SHALL BE CONSTRUCTED AND OPERATED IN A SANITARY MANNER ACCEPTABLE TO THE COUNTY HEALTH OFFICER. TRAILER HOMES SHALL BE SELF CONTAINED OR HAVE ACCEPTABLE FACILITIES FOR SEWAGE DISPOSAL AND WATER SUPPLY.
8. TRACTS, BUILDINGS, TRAILERS, ROADS ETC. SHALL BE MAINTAINED IN A CLEAN AND PROPERLY CONDITION TO PROTECT HEALTH, SAFETY, AND GENERAL WELFARE OF PROPERTY OWNERS AND TO PRESERVE, PROTECT AND ENHANCE THE ECOLOGICAL BASE AS HEREBY ESTABLISHED BY THIS SUBDIVISION.
9. THERE IS HEREBY CREATED THE LITTLE SPOKANE RIVER ACRES RECREATION ASSOCIATION, MEMBERSHIP IN WHICH SHALL CONSIST OF THE DEDICATORS AND THE

OWNERS OF ALL LOTS WITHIN THIS SUBDIVISION, WITH EACH INDIVIDUAL OWNER HAVING A FULL VOICE AND VOTE IN THE BUSINESS OF SAID ASSOCIATION. THE CERTIFIERS HEREBY DELEGATE TO SAID ASSOCIATION THE RIGHT TO ADOPT SUCH FORM OF ORGANIZATION AS THE MEMBERSHIP DETERMINE BY MAJORITY VOTE. THE ASSOCIATION IS HEREBY GRANTED THE POWER TO CERTIFY A LIEN AGAINST THE PERIODIC BASIS FOR AN EQUITABLE, PRORATED SHARE OF COSTS AND FEES DEEMED NECESSARY BY AN ASSOCIATION AND SUCH REASONABLE REGULATIONS AS MAY HEREAFTER BE RECORDED BY PEND OREILLE COUNTY AND/OR WASHINGTON STATE REGULATORY AUTHORITIES.

THE ASSOCIATION IS HEREBY GRANTED THE POWER TO UPGRADE SAID EASEMENT ROADS TO MEET THE MINIMUM COUNTY ROAD STANDARDS OF PEND OREILLE COUNTY, WASHINGTON, AND THE ASSOCIATION SHALL HAVE THE POWER AFTER THE EASEMENT ROADS HAVE BEEN BROUGHT TO COUNTY ROAD STANDARDS TO PETITION THE BOARD OF COMMISSIONERS OF PEND OREILLE COUNTY, WASHINGTON TO ACCEPT SAID ROADS AS PART OF THE COUNTY ROAD SYSTEM.

THE ASSOCIATION OR ANY MEMBER THEREOF SHALL HAVE THE RIGHT TO PREVENT OR STOP THE VIOLATION OF ANY OF THE ABOVE RESTRICTIONS AND ANY OF ITS DULY ADOPTED RULES AND REGULATIONS BY INJUNCTION OR OTHER LAWFUL PROCEDURE, AND TO RECOVER ANY DAMAGES RESULTING FROM SUCH VIOLATION.

IN WITNESS WHEREOF WE HAVE SET OUR HANDS THIS 26 DAY OF April 1973.

DALE M. KRAMER Dale M. Kramer LEONA M. KRAMER Leona M. Kramer  
 JACK MCCRACKEN Jack M. McCracken GRACE M. MCCRACKEN Grace M. McCracken  
 J. J. STREIBER J. J. Streiber ELDEN DIRKS, SECRETARY Elden Dirks  
 WESTERN HIGHLANDS, INC. WESTERN HIGHLANDS, INC.

ACKNOWLEDGEMENT

STATE OF \_\_\_\_\_  
 COUNTY OF \_\_\_\_\_  
 THIS IS TO CERTIFY THAT ON THIS 23 DAY OF November, 1973, BEFORE ME THE UNDERSIGNED, NOTARY PUBLIC IN AND FOR THE STATE OF \_\_\_\_\_, DALE M. KRAMER, HUSBAND AND WIFE, PERSONALLY APPEARED DALE M. KRAMER AND LEONA M. KRAMER, HUSBAND AND WIFE, TO ME KNOWN AS THE INDIVIDUALS WHO EXECUTED THE FORGING DEDICATION AND ACKNOWLEDGED AND SEALED THE SAME AS THEIR FREE AND VOLUNTARY ACT AND DEED FOR THE USES AND PURPOSES HEREIN MENTIONED.

WITNESS MY HAND AND OFFICIAL SEAL THE DAY AND YEAR FIRST ABOVE WRITTEN.

ALL ROADS EXCEPT EXISTING COUNTY ROAD ARE PRIVATE EASEMENT ROADS EASEMENT WIDTHS ON ALL PRIVATE EASEMENT ROADS IS 60 FEET OR WIDER WHERE NECESSARY FOR CUT AND FILL SLOPES

LITTLE SPOKANE RIVER ACRES

MT. 5004

The following covenants shall be part of this dedication:

1. No camper, trailer, building, etc., shall be set closer than 25 feet to any property line.
2. All buildings shall be constructed according to provisions of the current uniform building code.
3. Not more than one family residential unit may be placed on one tract, said unit shall have minimum liveable space of 800 square feet. Construction of the exterior shall be completed within four years of the start of construction.
4. Not more than three campers, trailer, or similar recreational use units may occupy the tract at any one time for a period of more than 48 hours in one week.
5. Commercial activity shall be limited to inobtrusive in home enterprise.
6. The owner reserves such easements as may be necessary over and along each lot for public utilities.
7. All facilities for sewage disposal and water supply systems for potable use shall be constricted and operated in a sanitary manner acceptable to the County Health Officer. Trailer homes shall be self contained or have acceptable facilities for sewage disposal and water supply.
8. Tracts, buildings, trailers, roads, etc., shall be maintained in a clean and orderly condition to protect health, safety, and general welfare of property owners and to preserve, protect and enhance the ecological base and esthetic beauty of this subdivision.
9. There is hereby created the "Little Spokane River Acres Recreation Association", membership in which shall consist of the dedicators and the owners of all lots within this subdivision.

LITTLE SPOKANE RIVER ACRES---continues

with each individual owner having a full voice and vote in the business of said Association. The certifiers hereby delegate to said Association, the right to adopt such form of organization as the members shall determine by majority vote. The Association is hereby granted the power to certify a lien against the respective lots and the owners thereof on an annual or other periodic basis for an equitable prorated share of costs and fees deemed necessary by a majority vote of the Association to advance the interests of the Association and such reasonable regulations as may hereafter be required by Pend Oreille County and/or Washington State regulatory authorities.

The Association is hereby granted the power to upgrade said easement roads to meet the minimum county standards of Pend Oreille County, Washington, and the Association shall have the power after the easement roads have been brought to county road standards to petition the board of commissioners of Pend Oreille County, Washington to accept said roads as part of the county road system.

10. Little Spokane River Acres Recreation Association or any member thereof shall have the right to prevent or stop the violation of any of the above restrictions and any of its duly adopted rules and regulations by injunction or other lawful procedure, and to recover any damages resulting from such violation.

OWNERS' CERTIFICATE

The undersigned hereby certify that the foregoing is a true and correct copy of the original as shown to them by the person claiming to be the owner of the same...

ACKNOWLEDGEMENT

This is to certify that on this day of August 1928, before me, the undersigned, a Notary Public in and for the State of Washington...

ACKNOWLEDGEMENT

This is to certify that on this day of August 1928, before me, the undersigned, a Notary Public in and for the State of Washington...

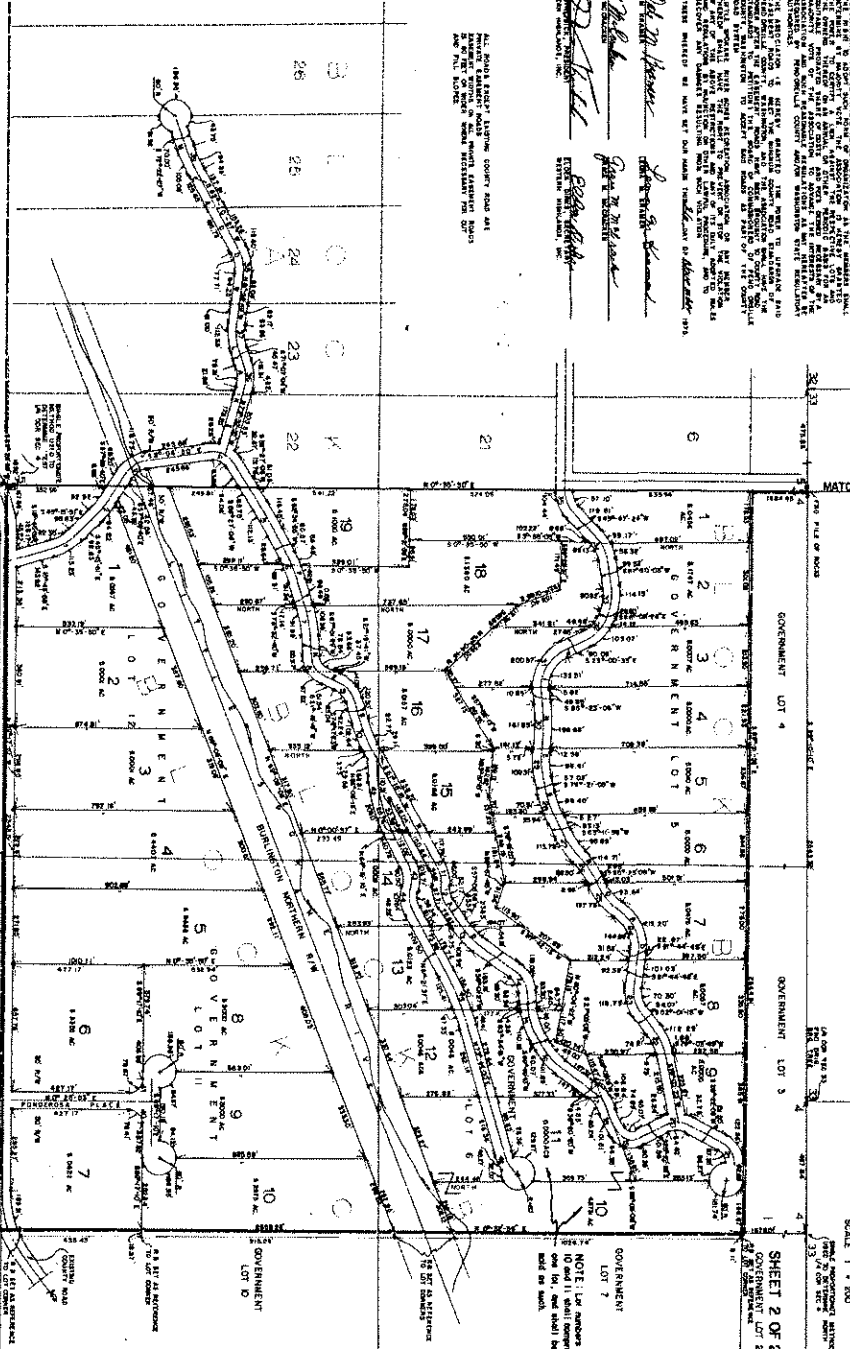
ACKNOWLEDGEMENT

This is to certify that on this day of August 1928, before me, the undersigned, a Notary Public in and for the State of Washington...

Notary Public in and for the State of Washington, my commission expires August 1930.

BEING GOVERNMENT LOTS 1, 8, 10, AND 11, AND A PART OF GOVERNMENT LOT 9, ALL IN SECTION 3, 30 N. 48 E. W. 1/4, ALSO A PART OF GOVERNMENT LOTS 5, 6, 11, AND 12, ALL IN SECTION 4, 1 S. 0 N. R. 95 E. W. 1/4, PEND OREILLE COUNTY, WASH.

NOTE: LOTS 1, 8, 10, AND 11, AND A PART OF GOVERNMENT LOT 9, ALL IN SECTION 3, 30 N. 48 E. W. 1/4, ALSO A PART OF GOVERNMENT LOTS 5, 6, 11, AND 12, ALL IN SECTION 4, 1 S. 0 N. R. 95 E. W. 1/4, PEND OREILLE COUNTY, WASH.



LEGEND  
--- 5/8" REBAR  
--- 4 X 4 CONCRETE MONUMENTS

CURVE DATA

Table with columns for CURVE DATA and CURVE DATA. It lists various curve parameters such as stationing, bearings, distances, and curve types for different sections of the survey.

DON ELLERSICK  
CONSULTING ENGINEER  
OFFICE 509 241 5105

LITTLE SPOKANE RIVER ACRES

1845/1-2083-1928

SHEET 2 OF 2

SCALE 1" = 100'

NOTE: Lot numbers 10 and 11 shall comprise one lot, and shall be sold as such.

1-24-2433  
1-24-2437  
1-24-2437

**ADMINISTRATOR'S CERTIFICATE**

I hereby certify that the foregoing plat is a true and correct copy of the original filed in my office this 24th day of January, 1912.

*Frank S. [Signature]*  
COUNTY CLERK

**COUNTY AUDITORS CERTIFICATE**

I hereby certify that the foregoing plat is a true and correct copy of the original filed in my office this 24th day of January, 1912.

*[Signature]*  
COUNTY AUDITOR

**COUNTY ASSESSORS CERTIFICATE**

I hereby certify that the foregoing plat is a true and correct copy of the original filed in my office this 24th day of January, 1912.

*[Signature]*  
COUNTY ASSESSOR

**PLANNING COMMISSION CERTIFICATE**

I hereby certify that the foregoing plat is a true and correct copy of the original filed in my office this 24th day of January, 1912.

*[Signature]*  
PLANNING COMMISSION

**COUNTY ENGINEERS CERTIFICATE**

I hereby certify that the foregoing plat is a true and correct copy of the original filed in my office this 24th day of January, 1912.

*[Signature]*  
COUNTY ENGINEER

**COUNTY HEALTH OFFICERS CERTIFICATE**

I hereby certify that the foregoing plat is a true and correct copy of the original filed in my office this 24th day of January, 1912.

*G. E. [Signature]*  
COUNTY HEALTH OFFICER

**BOARD OF COUNTY COMMISSIONERS CERTIFICATE**

I hereby certify that the foregoing plat is a true and correct copy of the original filed in my office this 24th day of January, 1912.

*[Signature]*  
BOARD OF COUNTY COMMISSIONERS

**COUNTY TREASURER'S CERTIFICATE**

I hereby certify that the foregoing plat is a true and correct copy of the original filed in my office this 24th day of January, 1912.

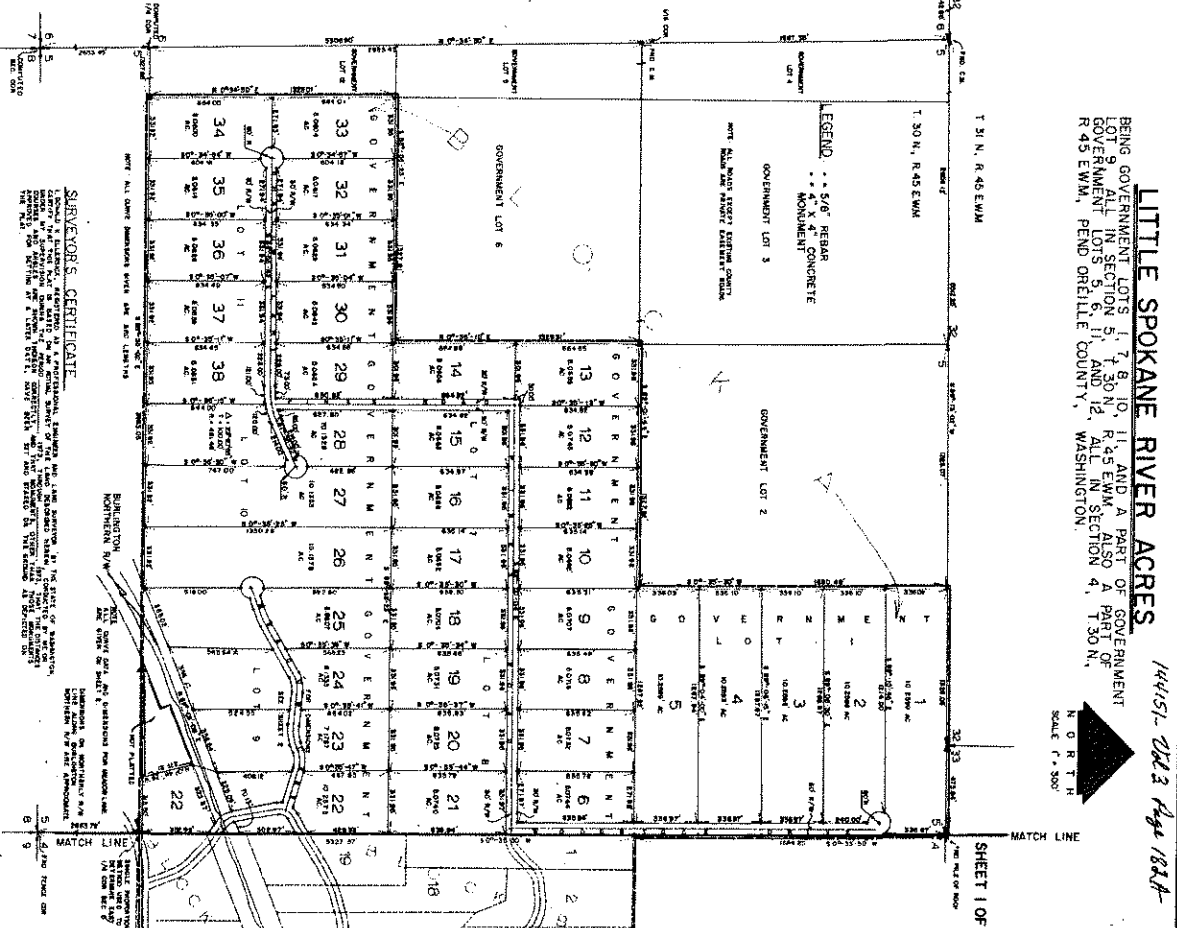
*[Signature]*  
COUNTY TREASURER

**BOUNDARY CLOSURE**

BEARING	DISTANCE	CORNER	DEPARTMENT
S 89° 55' 00" E	14.12	1	1/4 SECTION 1
S 89° 55' 00" E	14.12	2	1/4 SECTION 1
S 89° 55' 00" E	14.12	3	1/4 SECTION 1
S 89° 55' 00" E	14.12	4	1/4 SECTION 1
S 89° 55' 00" E	14.12	5	1/4 SECTION 1
S 89° 55' 00" E	14.12	6	1/4 SECTION 1
S 89° 55' 00" E	14.12	7	1/4 SECTION 1
S 89° 55' 00" E	14.12	8	1/4 SECTION 1
S 89° 55' 00" E	14.12	9	1/4 SECTION 1
S 89° 55' 00" E	14.12	10	1/4 SECTION 1
S 89° 55' 00" E	14.12	11	1/4 SECTION 1
S 89° 55' 00" E	14.12	12	1/4 SECTION 1
S 89° 55' 00" E	14.12	13	1/4 SECTION 1
S 89° 55' 00" E	14.12	14	1/4 SECTION 1
S 89° 55' 00" E	14.12	15	1/4 SECTION 1
S 89° 55' 00" E	14.12	16	1/4 SECTION 1
S 89° 55' 00" E	14.12	17	1/4 SECTION 1
S 89° 55' 00" E	14.12	18	1/4 SECTION 1
S 89° 55' 00" E	14.12	19	1/4 SECTION 1
S 89° 55' 00" E	14.12	20	1/4 SECTION 1
S 89° 55' 00" E	14.12	21	1/4 SECTION 1
S 89° 55' 00" E	14.12	22	1/4 SECTION 1
S 89° 55' 00" E	14.12	23	1/4 SECTION 1
S 89° 55' 00" E	14.12	24	1/4 SECTION 1
S 89° 55' 00" E	14.12	25	1/4 SECTION 1
S 89° 55' 00" E	14.12	26	1/4 SECTION 1
S 89° 55' 00" E	14.12	27	1/4 SECTION 1
S 89° 55' 00" E	14.12	28	1/4 SECTION 1
S 89° 55' 00" E	14.12	29	1/4 SECTION 1
S 89° 55' 00" E	14.12	30	1/4 SECTION 1
S 89° 55' 00" E	14.12	31	1/4 SECTION 1
S 89° 55' 00" E	14.12	32	1/4 SECTION 1
S 89° 55' 00" E	14.12	33	1/4 SECTION 1
S 89° 55' 00" E	14.12	34	1/4 SECTION 1
S 89° 55' 00" E	14.12	35	1/4 SECTION 1
S 89° 55' 00" E	14.12	36	1/4 SECTION 1
S 89° 55' 00" E	14.12	37	1/4 SECTION 1
S 89° 55' 00" E	14.12	38	1/4 SECTION 1
S 89° 55' 00" E	14.12	39	1/4 SECTION 1
S 89° 55' 00" E	14.12	40	1/4 SECTION 1
S 89° 55' 00" E	14.12	41	1/4 SECTION 1
S 89° 55' 00" E	14.12	42	1/4 SECTION 1
S 89° 55' 00" E	14.12	43	1/4 SECTION 1
S 89° 55' 00" E	14.12	44	1/4 SECTION 1
S 89° 55' 00" E	14.12	45	1/4 SECTION 1
S 89° 55' 00" E	14.12	46	1/4 SECTION 1
S 89° 55' 00" E	14.12	47	1/4 SECTION 1
S 89° 55' 00" E	14.12	48	1/4 SECTION 1
S 89° 55' 00" E	14.12	49	1/4 SECTION 1
S 89° 55' 00" E	14.12	50	1/4 SECTION 1
S 89° 55' 00" E	14.12	51	1/4 SECTION 1
S 89° 55' 00" E	14.12	52	1/4 SECTION 1
S 89° 55' 00" E	14.12	53	1/4 SECTION 1
S 89° 55' 00" E	14.12	54	1/4 SECTION 1
S 89° 55' 00" E	14.12	55	1/4 SECTION 1
S 89° 55' 00" E	14.12	56	1/4 SECTION 1
S 89° 55' 00" E	14.12	57	1/4 SECTION 1
S 89° 55' 00" E	14.12	58	1/4 SECTION 1
S 89° 55' 00" E	14.12	59	1/4 SECTION 1
S 89° 55' 00" E	14.12	60	1/4 SECTION 1
S 89° 55' 00" E	14.12	61	1/4 SECTION 1
S 89° 55' 00" E	14.12	62	1/4 SECTION 1
S 89° 55' 00" E	14.12	63	1/4 SECTION 1
S 89° 55' 00" E	14.12	64	1/4 SECTION 1
S 89° 55' 00" E	14.12	65	1/4 SECTION 1
S 89° 55' 00" E	14.12	66	1/4 SECTION 1
S 89° 55' 00" E	14.12	67	1/4 SECTION 1
S 89° 55' 00" E	14.12	68	1/4 SECTION 1
S 89° 55' 00" E	14.12	69	1/4 SECTION 1
S 89° 55' 00" E	14.12	70	1/4 SECTION 1
S 89° 55' 00" E	14.12	71	1/4 SECTION 1
S 89° 55' 00" E	14.12	72	1/4 SECTION 1
S 89° 55' 00" E	14.12	73	1/4 SECTION 1
S 89° 55' 00" E	14.12	74	1/4 SECTION 1
S 89° 55' 00" E	14.12	75	1/4 SECTION 1
S 89° 55' 00" E	14.12	76	1/4 SECTION 1
S 89° 55' 00" E	14.12	77	1/4 SECTION 1
S 89° 55' 00" E	14.12	78	1/4 SECTION 1
S 89° 55' 00" E	14.12	79	1/4 SECTION 1
S 89° 55' 00" E	14.12	80	1/4 SECTION 1
S 89° 55' 00" E	14.12	81	1/4 SECTION 1
S 89° 55' 00" E	14.12	82	1/4 SECTION 1
S 89° 55' 00" E	14.12	83	1/4 SECTION 1
S 89° 55' 00" E	14.12	84	1/4 SECTION 1
S 89° 55' 00" E	14.12	85	1/4 SECTION 1
S 89° 55' 00" E	14.12	86	1/4 SECTION 1
S 89° 55' 00" E	14.12	87	1/4 SECTION 1
S 89° 55' 00" E	14.12	88	1/4 SECTION 1
S 89° 55' 00" E	14.12	89	1/4 SECTION 1
S 89° 55' 00" E	14.12	90	1/4 SECTION 1
S 89° 55' 00" E	14.12	91	1/4 SECTION 1
S 89° 55' 00" E	14.12	92	1/4 SECTION 1
S 89° 55' 00" E	14.12	93	1/4 SECTION 1
S 89° 55' 00" E	14.12	94	1/4 SECTION 1
S 89° 55' 00" E	14.12	95	1/4 SECTION 1
S 89° 55' 00" E	14.12	96	1/4 SECTION 1
S 89° 55' 00" E	14.12	97	1/4 SECTION 1
S 89° 55' 00" E	14.12	98	1/4 SECTION 1
S 89° 55' 00" E	14.12	99	1/4 SECTION 1
S 89° 55' 00" E	14.12	100	1/4 SECTION 1

**NOTE:** Portions of some lots and some adjacent lots are shown in this plat which are not shown in the original plat. The portions of the original plat which are not shown in this plat are shown in the original plat.

144151-2023 Page 188A  
DON ELLERSICK  
CONSULTING ENGINEER  
KENNETH, WASH. 99145  
PHONE: 529-491-2525



**LITTLE SPOKANE RIVER ACRES**  
BEING GOVERNMENT LOTS 1, 7, 8, 10, 11, AND A PART OF GOVERNMENT LOT 9 ALL IN SECTION 5, T. 30 N., R. 45 E.W.M. ALSO A PART OF GOVERNMENT LOTS 5, 6, 11, AND 12 ALL IN SECTION 4, T. 30 N., R. 45 E.W.M., PEND OREILLE COUNTY, WASHINGTON.

144151-2023 Page 188A

N O R T H  
SCALE 1" = 500'

SHEET 1 OF 2

144151-2023

