

20110005329

AUDITOR'S CERTIFICATE

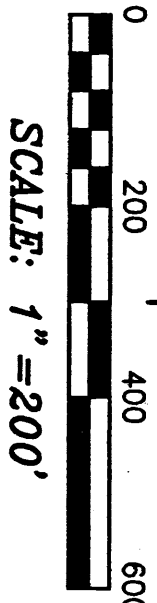
FILED FOR RECORD THIS 27th DAY OF AUGUST, 2011
AT 11:55 A.M. IN BOOK 31 OF SURVEYS AT PAGE 65
AT THE REQUEST OF PAT MOORE & ASSOCIATES, INC.

COUNTY AUDITOR: TIM GRAY

F. CLINTON

DEPUTY

FEE \$128.00



- LEGEND:**
- - FND STANDARD DNR ALUMINUM CAP MONUMENT PER R1, UNLESS NOTED OTHERWISE
 - - SET 1/2" REBAR WITH YELLOW PLASTIC CAP STAMPED "MOORE 18091"
 - - SET HUB WITH LATH ON PROPERTY LINE

BASIS OF BEARINGS:

THE BEARING N87°16'56"E ON THE E-W CENTERLINE OF SECTION 5 AS SHOWN ON THE SURVEY RECORDED IN BOOK 21 OF SURVEYS, PAGES 184 THROUGH 192 WAS USED AS THE BASIS OF BEARINGS FOR THIS MAP

REFERENCES:

- (R1) SURVEY RECORDED IN BOOK 21 OF SURVEYS, PAGES 184 THROUGH 192
- (R2) SURVEY RECORDED IN BOOK 28 OF SURVEYS, PAGE 20
- (R3) SURVEY RECORDED IN BOOK "D" OS SHORT PLATS, PAGE 63

PROCEDURES AND EQUIPMENT:

THIS SURVEY WAS PERFORMED USING A COMBINATION OF A TOPCON "GR3" RTK GPS SYSTEM, TOPCON GTS 303 TOTAL STATION AND TOPCON FC 2500 "DATA COLLECTOR". PROCEDURES WERE USED THAT MEET OR EXCEED THE LINEAR AND ANGULAR REQUIREMENTS OF WAC 332-130-090(1)(E) FOREST AND CULTIVATED AREAS.

SURVEYOR'S NOTES:

- 1) THE PURPOSE OF THIS SURVEY WAS TO MONUMENT THE BOUNDARY OF PARCEL "A" AND SET MISC. POINTS ON THE PROPERTY LINES.
- 2) DUE, IN PART TO THE SIGNIFICANT DISTORTION IN THE NORTHEAST QUARTER OF SECTION 5, THE EXISTING FENCE LINES IN THIS AREA ARE NO WHERE NEAR THE MONUMENTED LINES (IN EXCESS OF 100' IN MOST CASES).

RECORD OF SURVEY

FOR

MARVIN & JENNY O'HEARN

LOCATED IN THE NE1/4

OF SECTION 5, T36N, R38E, W.M.

STEVENS COUNTY, WA

JULY 2011



SURVEYOR'S CERTIFICATE:

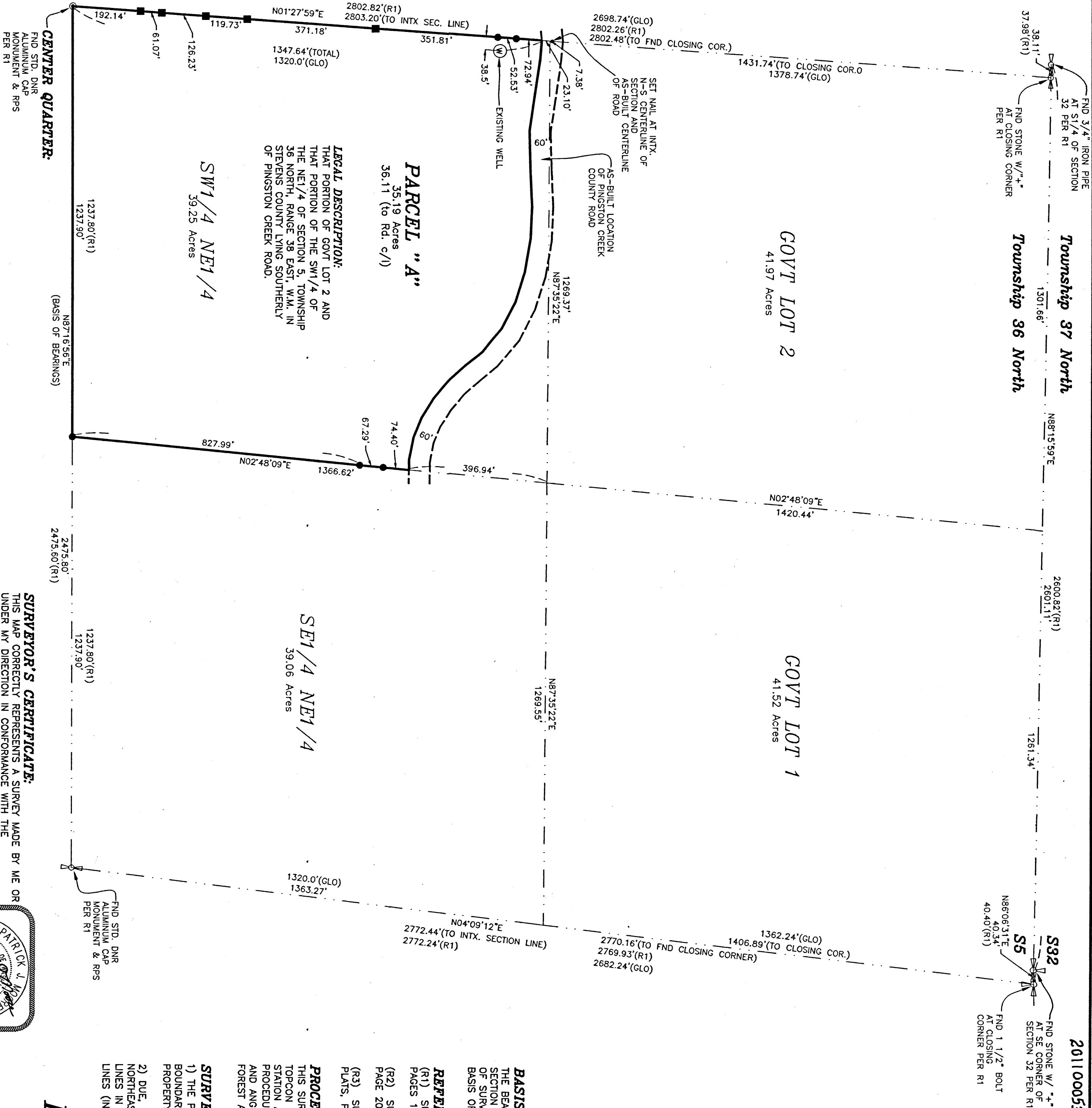
THIS MAP CORRECTLY REPRESENTS A SURVEY MADE BY ME OR UNDER MY DIRECTION IN CONFORMANCE WITH THE REQUIREMENTS OF THE SURVEY RECORDING ACT AT THE REQUEST OF MARVIN O'HEARN IN JULY, 2011

Patrick J. Moore

PATRICK J. MOORE, PLS No. 18091

PAT MOORE & ASSOCIATES, INC.
7224 W. Johansen Avenue
Nine Mile Falls, WA 99026
1-509-328-1224

PJM 11046



PARCEL "A"

35.19 Acres
35.11 (to Rd. c/l)

LEGAL DESCRIPTION:
THAT PORTION OF GOVT LOT 2 AND THAT PORTION OF THE SW1/4 OF THE NE1/4 OF SECTION 5, TOWNSHIP 36 NORTH, RANGE 38 EAST, W.M. IN STEVENS COUNTY LYING SOUTHERLY OF PINESTON CREEK ROAD.

SW1/4 NE1/4
39.25 Acres

SE1/4 NE1/4
39.06 Acres

CENTER QUARTER:

FND STD. DNR
ALUMINUM CAP
MONUMENT & RPS
PER R1

Township 37 North
Township 36 North

GOVT LOT 2
41.97 Acres

GOVT LOT 1
41.52 Acres

S32
FND STONE W/ "A"
AT SE CORNER OF
SECTION 32 PER R1

S5
FND 1 1/2" BOLT
AT CLOSING
CORNER PER R1

2770.16'(TO FND CLOSING CORNER)
2769.93'(R1)
2682.24'(GLO)

N04°09'12"E
2772.44'(TO INTX. SECTION LINE)
2772.24'(R1)

1320.0'(GLO)
1363.27'

FND STD. DNR
ALUMINUM CAP
MONUMENT & RPS
PER R1

1237.80'(R1)
1237.90'
2475.80'
2475.60'(R1)

N87°16'56"E
(BASIS OF BEARINGS)

1237.80'(R1)
1237.90'

192.14'

61.07'
126.23'

2802.82'(R1)
2803.20'(TO INTX SEC. LINE)
351.81'
371.18'
119.73'
1347.64'(TOTAL)
1320.0'(GLO)

2698.74'(GLO)
2802.26'(R1)
2802.48'(TO FND CLOSING COR.)

1431.74'(TO CLOSING COR.0
1378.74'(GLO)

FND 3/4" IRON PIPE
AT S1/4 OF SECTION
32 PER R1
FND STONE W/ "A"
AT CLOSING CORNER
PER R1

1301.66'

N88°15'59"E

2600.82'(R1)
2601.11'

1261.34'

N02°48'09"E
1420.44'

N87°35'22"E
1269.55'

1269.37'
N87°35'22"E

396.94'

60°

74.40'

67.29'

1366.62'

N02°48'09"E

827.99°

60°

74.40'

67.29'

1366.62'

N02°48'09"E

827.99°

60°

74.40'

67.29'

1366.62'

N02°48'09"E

827.99°

60°

74.40'

67.29'

1366.62'

N02°48'09"E

827.99°

60°

74.40'

67.29'

1366.62'

N02°48'09"E

827.99°

60°

74.40'

67.29'

1366.62'

N02°48'09"E

827.99°

60°

74.40'

67.29'

1366.62'

N02°48'09"E

827.99°

60°

74.40'

67.29'

1366.62'

N02°48'09"E

827.99°

60°

74.40'

67.29'

1366.62'

N02°48'09"E

827.99°

60°

74.40'

67.29'

1366.62'

N02°48'09"E

827.99°

60°

74.40'

67.29'

1366.62'

N02°48'09"E

827.99°

60°

74.40'

67.29'

1366.62'

N02°48'09"E

827.99°

60°

74.40'

67.29'

1366.62'

N02°48'09"E

827.99°

60°

74.40'

67.29'

1366.62'

N02°48'09"E

827.99°

60°

74.40'

67.29'

1366.62'

N02°48'09"E

827.99°

60°

74.40'

67.29'

1366.62'

N02°48'09"E

827.99°

60°

74.40'

67.29'

1366.62'

N02°48'09"E

827.99°

60°

74.40'

67.29'

1366.62'

N02°48'09"E

827.99°

60°

74.40'

67.29'

1366.62'

N02°48'09"E

827.99°

60°

74.40'

67.29'

1366.62'

N02°48'09"E

827.99°

60°

74.40'

67.29'

1366.62'

N02°48'09"E

827.99°

60°

74.40'

67.29'

1366.62'

N02°48'09"E

827.99°

60°

74.40'

67.29'

1366.62'

N02°48'09"E

827.99°

60°

74.40'

67.29'

1366.62'

N02°48'09"E

827.99°

60°

74.40'

67.29'

1366.62'

N02°48'09"E

827.99°

60°

74.40'

67.29'

1366.62'

N02°48'09"E

827.99°

60°

74.40'

67.29'

1366.62'

N02°48'09"E

827.99°

60°

74.40'

67.29'

1366.62'

N02°48'09"E

827.99°

60°

74.40'

67.29'

1366.62'

N02°48'09"E

827.99°

60°

74.40'

67.29'

1366.62'

N02°48'09"E

827.99°

60°

74.40'

67.29'

1366.62'

N02°48'09"E

827.99°

60°

74.40'

67.29'

1366.62'

N02°48'09"E

827.99°

60°

74.40'

67.29'

1366.62'

N02°48'09"E

827.99°

60°

74.40'

67.29'

1366.62'

N02°48'09"E

827.99°

60°

74.40'

67.29'

1366.62'

N02°48'09"E

827.99°

60°

74.40'

67.29'

1366.62'

N02°48'09"E

827.99°