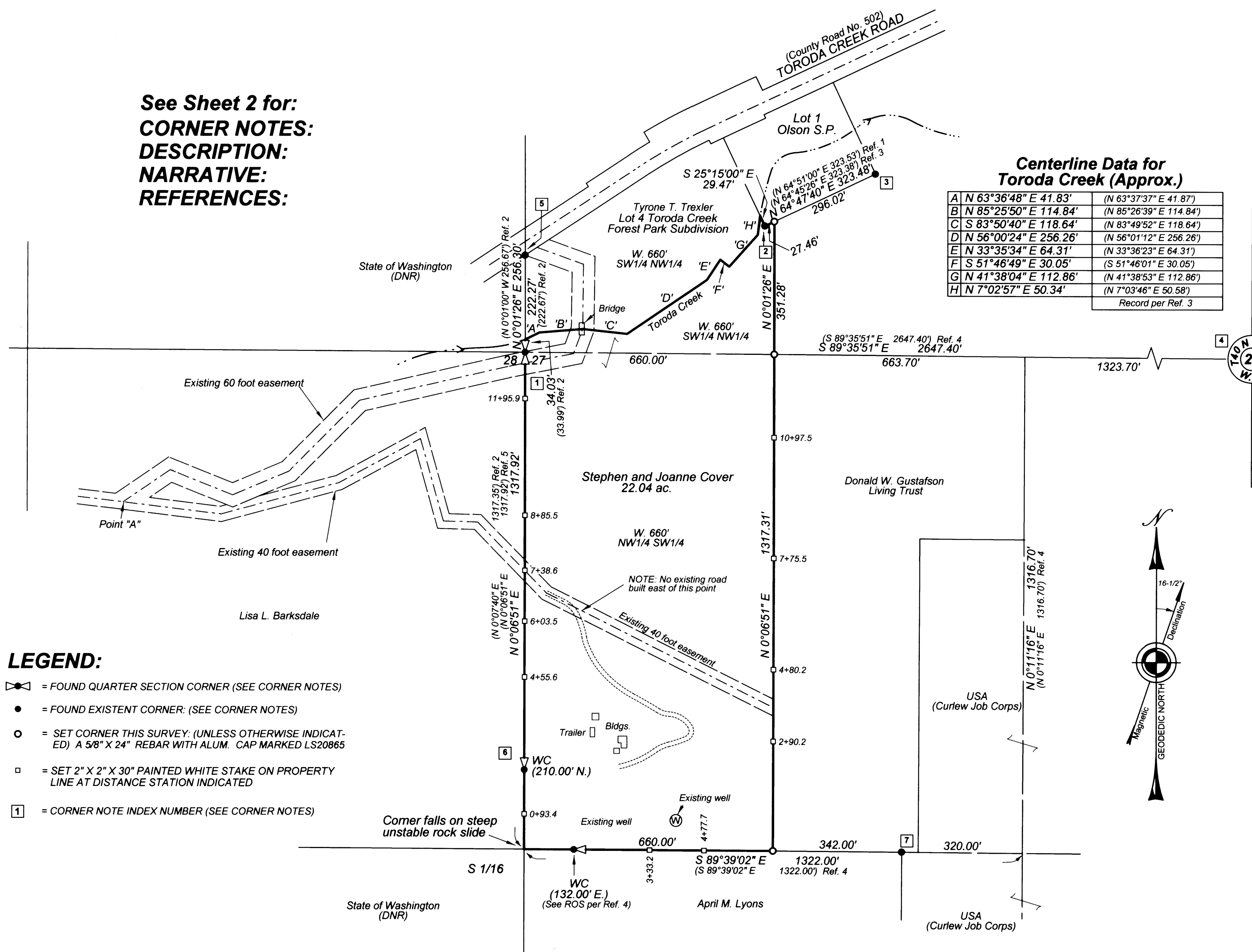


# RECORD OF SURVEY

Pt. of the NW1/4 of the SW1/4 and a portion of the SW1/4 of the NW1/4 of Section 27, T. 40 N., R. 32 E., W.M., FERRY COUNTY, WASHINGTON

See Sheet 2 for:  
**CORNER NOTES:**  
**DESCRIPTION:**  
**NARRATIVE:**  
**REFERENCES:**



**Centerline Data for Toroda Creek (Approx.)**

A	N 63°36'48" E 41.83'	(N 63°37'37" E 41.87')
B	N 85°25'50" E 114.84'	(N 85°26'39" E 114.84')
C	S 83°50'40" E 118.64'	(N 83°49'52" E 118.64')
D	N 56°00'24" E 256.26'	(N 56°01'12" E 256.26')
E	N 33°35'34" E 64.31'	(N 33°36'23" E 64.31')
F	S 51°46'49" E 30.05'	(S 51°46'01" E 30.05')
G	N 41°38'04" E 112.86'	(N 41°38'53" E 112.86')
H	N 7°02'57" E 50.34'	(N 7°03'46" E 50.58')

Record per Ref. 3

Section 27  
T 40 N, R 32 E, W.M.

X			
X	X		

- LEGEND:**
- ⊠ = FOUND QUARTER SECTION CORNER (SEE CORNER NOTES)
  - = FOUND EXISTENT CORNER: (SEE CORNER NOTES)
  - = SET CORNER THIS SURVEY: (UNLESS OTHERWISE INDICATED) A 5/8" X 24" REBAR WITH ALUM. CAP MARKED LS20865
  - = SET 2" X 2" X 30" PAINTED WHITE STAKE ON PROPERTY LINE AT DISTANCE STATION INDICATED
  - 1 = CORNER NOTE INDEX NUMBER (SEE CORNER NOTES)

**BASIS OF BEARING:**  
The west line of the southwest quarter of Section 27 as derived by solar observation as N.0°06'51"E per Refs. 3 and 4.

**SCALE: 1 INCH = 200 FEET**

1" = 200'

**SURVEYOR'S CERTIFICATE**

This map correctly represents a survey performed by me, or under my direction, and in accordance with the Survey Recording Act.

At the request of: Stephen and Joanne Cover in May of 2016.

Signed and sealed this 7<sup>th</sup> day of Oct., 2016.

*Grant D. Tolton*  
Grant D. Tolton, P.L.S. Certificate No. 20865

---

**AUDITOR'S CERTIFICATE**

Filed for record this 7<sup>th</sup> day of Oct., 2016 at 3:14 P.M., Page 54 of 57, Book 9 of Surveys.

At the request of: Stephen and Joanne Cover AUDITOR'S FILE NO. 287356

*Dianna Galvan*  
Dianna Galvan, Ferry County Auditor

**MID-MOUNTAIN SURVEYORS, INC.**

Grant D. Tolton  
Professional Land Surveyor  
Certified Federal Surveyor (CFedS)

4 Mid-Mountain Lane  
Republic, WA 99166  
(509) 775-3563  
www.mid-mtn.com

FILENAME: M:\AAA\JOBS 2016\COVER1 DRAWING\COVER.DRG

DRAWN BY: E.G.F. & G.D.T.	DATE: 6-17-16
CHECKED BY: G.D.T.	JOB NO.: 16-026
SCALE: 1" = 200'	SHEET 1 OF 2

